



Providing exceptional accuracy and high-precision works.

## **Contents**

**0.1 Introduction**

**0.2 History & Background**

**0.3 Services**

**0.4 Case Studies**

**0.5 Clients**

**0.6 Accreditations**

**0.7 Operating Depots**



As one of West Yorkshire's leading civil engineering firms, Civcon Civil Engineering sets the standard for excellence. Our client-first approach and unwavering commitment to quality allow us to build lasting partnerships and deliver bespoke solutions completed to the highest standard - on time, every time.

Since day one, Civcon Civil Engineering has evolved into a trusted industry leader, defined by our dedication to delivering exceptional, high-quality services for every client. Guided by our stringent corporate standards, we maintain an outstanding track record in health, safety, quality, and environmental performance. The strong, long-standing partnerships we've built with our clients continue to result in repeat contracts - reinforcing our reputation for reliability and excellence.

Founded in August 2018, by the company directors Civcon Civil Engineering specialises in civil engineering across all sectors.

Since its inception, we have grown from a small start-up in Yorkshire with no external funding into a dynamic, results-driven corporation. We've built a dedicated and energetic workforce that consistently delivers multi-million-pound projects for a diverse portfolio of key clients.

Over the years, we've had the privilege of partnering with some of the industry's most notable organisations, delivering projects for both end-user clients and principal contractors. We are proud to have a strong, dedicated management team committed to fostering a positive working environment for our clients and our people, an approach we believe is key to delivering high-quality projects on time and within budget.

We work hard to build collaborative, long-lasting relationships with every client and their representatives, approaching each project with openness, transparency, and a shared commitment to achieving the best possible outcome. With a highly skilled and versatile team, we have the capability to deliver every aspect of our projects with confidence and precision.

**Your vision remains our focus.**

# As a modern, innovative company we provide a wide range of services.

### Drainage & Service Ducts

- Traditional drainage installation - all pipe diametres, depths and material types;
- Push fit pipework, ductile iron pipework, butt fusion welding;
- Pressured mains / rising mains;
- Pumping station installation;
- Culvert installations - any size, depth, location;
- Connections onto existing mains;
- Installation of basic and complex shafts, chambers & gullies;
- Modifications and cleaning to existing drainage systems;
- Slip lining existing drainage systems;
- Grouting for existing drainage.

### Earthworks

- General site clearance and small demolition works;
- Construction of reinforced earth embankments;
- Bulk earthworks;
- Vacuum excavation works;
- Disposable off-site;
- General fill, capping and sub-base;
- Construction of RECO walls;
- Gabion baskets;
- Topsoiling / seeding.

### Kerbs, Footways & Paved Areas

- Kerb, edging and channel installation;
- Drainage kerbs & kerb blocks;
- Linear drainage channels;
- Concrete paving - flags, sets, blocks;
- Granite paving & sets;
- Tactile paving;
- Installations of steps & street furniture;
- Signage installation.

### Pavements

- Trench reinstatement;
- Management of surfacing subcontractors;
- Concrete slab installation;
- Train station platforms.





### **Masonry Works**

- Headwall construction;
- General brickwork, blockwork & stonework;
- Modifications to existing buildings;
- Water mains - replacement & installation;
- Electrical mains - replacement & installation;
- Accommodation works for other statutory bodies.

### **Temporary Works**

- Design, supply and installation of sheet piling works;
- Installation of water diversions (e.g. fluming);
- Installation and management of over pumping;
- Sprayeed concrete.

### **Structural Concrete**

- Full FRC capability; design of temporary works, installation of formwork/reinforcement and placement of concrete;
- Installation of precast concrete elements;
- Volumetric Wagons provided - all concrete mixed on site.

### **Labour Only Supply**

- All trades.

### **Plant Hire**

- All types of equipment available for use by third parties.

## Case Studies

0.4.1 - Lawnswood Roundabout

0.4.2 - Barnsdale Culvert

0.4.3 - Wentbridge

0.4.4 - Palatine

# Lawnswood Roundabout, Leeds City Council

### Project overview

This scheme is a significant live highways project located on a strategic route in North Leeds, at the intersection of the A6120 Ring Road and the A660 Otley Road. The scheme is part of Leeds City Council's wider transport and active travel strategy, funded by the West Yorkshire Combined Authority (WYCA).

The junction serves as a busy commuter corridor with nearby residential areas and a primary school. Prior to the scheme, pedestrian crossings across the roundabout were challenging, and during peak times, unsafe. The aim of the scheme is to improve the traffic flow, increase capacity, and deliver a safer, more accessible route for pedestrians and cyclists.

### Our role

Civcon Civil Engineering have been appointed as the principal civils contractor working on the scheme. Our role is to deliver all core civil engineering works associated with the scheme including drainage and attenuation infrastructure, service diversion works, carriageway construction up to formation and sub-base, and the construction of new footways and segregated cycle routes.

At tender stage, the client made a strategic decision to focus on civils delivery rather than full carriageway surfacing. This approach allowed for greater flexibility in the management of pedestrians throughout the works while still maintaining value for money for the client.

### Delivering a live highway scheme

From the offset the project presented the typical complexities expected with a live highway project. The junction remained open and operational throughout the works, requiring carefully planned sequencing, close coordination with the traffic management team, and clear communication among all involved parties and local residents.

### Overcoming challenges below ground

Some of the most significant challenges with this scheme lay beneath the surface. The project encountered extensive uncharted utilities, including gas, telecoms, and water infrastructure that had direct conflicts with the proposed drainage and attenuation systems.

The scheme included a substantial attenuation system, designed to protect Leeds' already constrained highway drainage network. Delivering this in a safe and effective way required multiple design adaptations, service diversions, and careful coordination between the design team, utilities, and the client.

Ground conditions also proved to be more complex than initially anticipated. Rock was encountered at depth during the construction of deep manholes, requiring quick action and specialist methods to maintain carriageway stability while works were carried out beneath live traffic lanes. What was originally planned as a short activity became a demanding operation - one that our team successfully delivered without compromising safety or quality.

### A collaborative approach

Collaboration between all parties has been key throughout the project. Strong working relationships were developed with Eric Wright and the wider project team, allowing challenges to be addressed collectively to apply the best solution, rather than in isolation.

Programme revisions and scope changes were managed transparently, ensuring all parties remained aligned as the project evolved.

Where early site-level challenges arose, swift action was taken to address the situation, strengthening the trust in leadership and communication on site resulting in a cohesive and effective delivery team.

### Quality as a benchmark

Despite some technical and logistical challenges, quality remained a defining feature of the project. Drainage and manhole installations inspected by Yorkshire Water were described as "exceptional", setting the benchmark for future schemes.

To date the project has no recorded significant defects, reflecting the high standards maintained on site and the experience of the project team.

### Reflecting on success

While the Lawnswood scheme is still live, it already demonstrates the value of experience, adaptability, and collaboration when working in a complex highway environment.

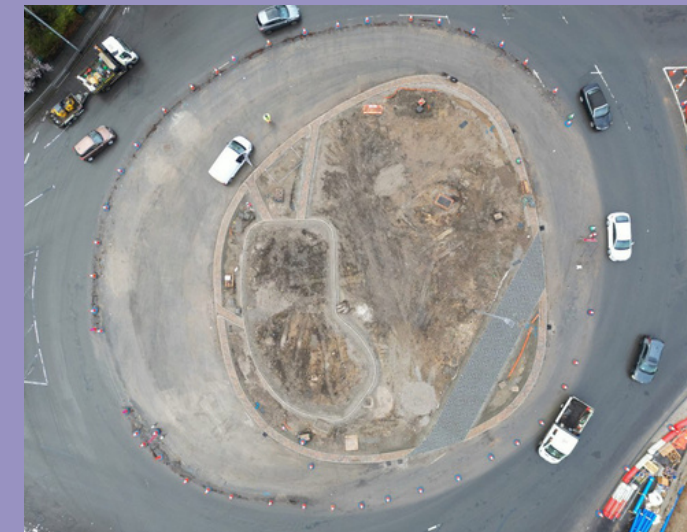
The project team has navigated unforeseen conditions, design changes, and live traffic constraints whilst maintaining safety, quality, and public confidence.

### Lessons learned

The lessons learned - particularly around early engagement, flexibility, and collaborative problem solving - will continue to shape how future projects are delivered.

Above all, the scheme reflects a commitment to delivering works that support safer travel, improved connectivity, and long-term value for the community.

Despite challenges, our team was able to maintain high quality work under pressure, adapting construction methodologies to protect the programme and ensure safety when managing unforeseen conditions.



# Barnsdale Culvert, Goldbeck Solar

## Project overview

The Barnsdale Culvert Access Bridge formed a critical enabling works package for a new solar farm development. The site required access for a 100-tonne crane to reach an upper-field, however an existing culvert and farm track arrangement prevented heavy plant movement.

The works were located adjacent to a live watercourse and was subject to environmental and flood-risk constraints. Any proposed solution needed to protect the integrity of the existing culvert, maintain water flow, and fully comply with environmental permitting requirements, while still providing a safe and robust access route for construction activities.

## Our role

Civcon Civil Engineering were appointed to deliver the civils package on a design and build basis, providing a fully coordinated solution from the feasibility stage to handover.

Our role included early option appraisal, design coordination, obtaining environmental approvals, and the construction of a reinforced access structure capable of supporting heavy crane movements without imposing on the existing culvert.

We worked alongside specialist structural engineers to undertake the detailed design.

## Developing the right solution

Initial proposals considered a widerange of options, including lining or strengthening the existing culvert. While technically viable, these solutions proved costly and risk-intensive given the tight programme and environmental constraints.

Working with the specialists, we were able to develop a simplified and more effective solution; a reinforced concrete slab bridge spanning over the existing culvert, adding support for the transferring of loads onto the newly constructed foundations positioned either side of the watercourse.

The design was subject to several constraints;

- The structure needed to accommodate a 100-tonne crane,
- No loading was permitted on the existing culvert,
- Finished levels were restricted to a maximum of 100mm above existing ground to mitigate flood risk.

Through careful design coordination, we were able to create a compliant solution, achieving a good balance between cost, constructability, and environmental protection.

## Overcoming environmental constraints

The close proximity to the watercourse introduced additional complexities to the project. The works were subject to environmental permits governing activities such as dredging and construction over the water.

Despite these constraints, we were able to deliver the work safely and well within accordance with all regulatory requirements using controlled excavation techniques along with specialist form-work systems.

## Quality as a benchmark

Quality control was central to the delivery of this scheme. A robust inspection and test plan was created and implemented, with multiple hold points covering reinforcement installation, form-work and concrete placement.

Throughout the project, we maintained detailed as-built records, calculations, and verification documents to ensure compliance with the approved design. This approach reinforced the confidence of all parties involved.

## Managing challenges

As with many design and build projects, the approval process presented challenges, particularly where third-party reviews were required. Late-stage design queries and verification requests required additional coordination to ensure the programme was met.

Through clear technical instructions and a structured approach, we were able to meet all requirements successfully and ultimately complete the works without compromising quality or safety.

## Reflecting on success

Throughout this project, we were able to achieve all the clients objectives - enabling safe access for heavy plant operations, and allowing the wider solar farm development to proceed.

The project demonstrated the value of early option appraisal, clear allocation of design responsibility, and disciplined management when working within an environmentally sensitive site.

The culvert remains in use and has performed as expected, reflecting the well-considered and robust engineering solutions we provided.



# Wentbridge, Octavius

### Project overview

This project involved delivering critical civil and drainage works as part of a major bridge improvement scheme on the A1 road network near Doncaster. The wider project, delivered for National Highways, evolved significantly from the original scope.

Civcon Civil Engineering initially undertook preliminary drainage and structural works beneath the bridge in 2024. Several months later, we were invited to return to the site to support Octavius with specialist civils works due to quality and capability challenges with other contractors.

Working closely with Octavius, we were able to deliver a series of critical packages including central reservation works, drainage installation, specialist earthworks, and access infrastructure.

The works were delivered under significant programme pressure, with the key objective being the re-opening on the A1 before Christmas.

### Our role

Civcon Civil Engineering were appointed to deliver a wide range of works including;

- Central reservation reconstruction, including kerbing and surfacing preparation,
- Installation of concrete blocks and associated infill works,
- Specialist earthworks,
- Construction of an access road through agricultural land to support operations,
- Installation of new highway drainage including filter carrier drains,
- Installation of gullies and connections in the existing drainage infrastructure,
- Excavation to accommodate revised drainage alignments.

### Working collaboratively

We adopted a flexible and collaborative approach, working closely with Octavius to maintain programme progress despite the evolving design information and logistical constraints.

Key elements of our approach included:

- Rapid mobilisation of skilled labour to support the project at short notice,
- Flexible working arrangements, including extended hours and 24-hour working periods to meet the tight programme deadline,
- Continuous coordination with Octavius to sequence works around design development and material availability,
- Adaptation of construction methodology to allow excavation and preparatory works to progress ahead of drainage installation,
- Careful risk management for specialist engineered fill materials with strict moisture content requirements.

### Key delivery challenges

The scheme presented several programme and operational constraints typical of large-scale highway infrastructure works.

These included the late release of detailed design information for the permanent drainage works and significant programme pressures associated with the requirement to reopen the A1 before Christmas.

Additional challenges arose when the drainage alignment was moved into the carriageway, requiring excavation through rock, alongside long lead-in periods for specialist drainage materials.

The works were further complicated by a restricted site footprint due to the inability to secure full traffic management closures, as well as limited material storage areas, which required careful sequencing of activities and close management of stockpiles.

### Providing positive outcomes

The project delivered several positive outcomes and added value to the wider bridge improvement scheme.

Multiple work packages were successfully completed in support of the overall programme, with progress maintained despite late design changes and significant logistical constraints.

The works were completed in time to support the reopening of the A1 ahead of the Christmas deadline, while maintaining high standards of workmanship across drainage, civil engineering, and central reservation activities.

In addition, experienced labour and strong site leadership were provided throughout the project, helping to stabilise delivery on a complex scheme and maintain effective operational relationships with the principal contractor.

### Reflecting on success

This project demonstrates our capability to mobilise quickly and deliver complex highway infrastructure works within a challenging timescale and operational constraints.

The scheme highlighted several key strengths demonstrated throughout the project, including the ability to support major strategic road network schemes and adapt effectively to evolving design and programme requirements.

It also showcased our capability to deliver high-quality civil engineering and drainage works within high-speed road environments, where careful planning and operational control are essential.



# Palatine Bridge, Octavius

## Project overview

This scheme was an emergency erosion protection project located beneath the M60 motorway, one of the busiest routes around Manchester. The works were initiated following flood events which exposed the bridge pier foundations.

With winter conditions fast approaching, further flooding posed a serious risk to the stability of the bridge. Any additional erosion could have resulted in partial, or even full, closure of the M60, creating significant safety, economic and network impacts.

## Our role

Civcon Civil Engineering were appointed to deliver the full scope of civils and erosion protection works including;

- Emergency enabling works to stabilise the exposed piers,
- Ground investigation support,
- Cofferdam installation and river flow management,
- Rock armour (rip-rap) installation to the riverbed,
- Earthworks and bank reconstruction using Type 1 material,
- Geogrid installation,
- Gabion basket installation for long-term erosion protection,
- Slope stabilisation,
- Reprofiting and reinstatement of public footpaths, Construction access, environmental protection, and safety controls throughout the scheme.

All works were undertaken adjacent to a live river environment.

## Adopting a collaborative and proactive approach

We adopted a collaborative and proactive approach, working closely with the client, principal contractor, and design team to develop and deliver a safe, durable solution under emergency conditions.

Key elements of our approach included;

- Rapid mobilisation to deliver enabling works and immediate risk mitigation,
- Close coordination between all teams,
- Advanced procurement of critical materials to reduce supply chain risks,
- Continuous seven-day working, including over the Christmas and New Year period,
- Robust safety measures including fall protection, emergency rescue planning, and environmental controls,
- Clear communication among all involved parties to maintain confidence throughout the delivery.

## Overcoming high-risk constraints

The project presented several high-risk constraints typical of emergency river and infrastructure protection schemes.

These included exposed bridge pier foundations following flood damage and significant programme pressure driven by the need to mitigate the risk of further winter flooding.

The works were undertaken within a live river environment with variable water levels, requiring careful planning and management, alongside strict controls to address the public interface and fall-into-water risks.

Progress was also dependent on the results of ground investigations to inform the design, while procurement and mobilisation had to be undertaken during the Christmas shutdown period, adding further logistical and programme challenges.

## Looking at the added value

The project delivered a number of important outcomes and added value in response to the urgent nature of the works.

Emergency stabilisation of the bridge pier foundations was successfully achieved, followed by the installation of permanent erosion protection measures to reduce the risk of future flood damage.

Delivery was maintained continuously throughout the festive period, enabling the team to meet critical programme commitments without causing any unplanned disruption to the M60 motorway network.

Safe public access was maintained at all times, and the project received positive feedback from the client for the effective management and delivery of a high-risk, time-critical scheme.

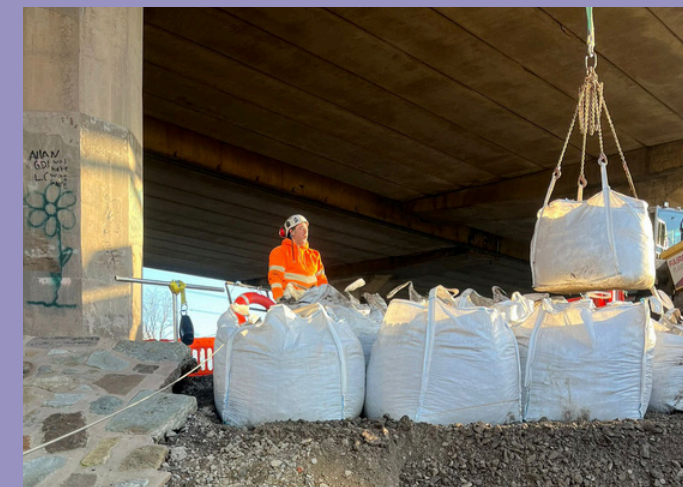
## Reflecting on success

This project effectively demonstrates our capability to deliver time-critical erosion protection and infrastructure works in high-risk areas.

The scheme highlights our strengths in the following areas;

- Emergency response and rapid mobilisation,
- Managing environmental and public safety risks,
- Delivering complex works within live river and transport corridors,
- Maintaining programme certainty under extreme time constraints,
- Collaboration effectively with clients and supply chain partners.

The lessons learned from this scheme continue to inform our approach to future works.



0.5 Clients



## 0.6 Accreditations



Registered Waste Carrier



ISO 9001  
QUALITY MANAGEMENT

## Leeds - The Royal Armouries

Our Leeds depot is strategically positioned at the heart of West Yorkshire's urban centre, providing rapid access to major infrastructure projects across Leeds, Bradford, Calderdale, and Kirklees. The city's road network converges on our location, enabling same-day mobilisation to sites throughout the Leeds metropolitan area and beyond. Close proximity to the M1 and M62 corridors ensures seamless logistics for projects across northern England.

/// [golf.until.dusty](http://golf.until.dusty)



## Pontefract - Trading Estate

Based in this central trading estate, our Pontefract depot serves the wider mid-Yorkshire region with efficient coverage of Wakefield, Castleford, and surrounding districts. The location offers strategic access to major routes linking Yorkshire's industrial heartland, making it ideal for rapid response to projects across South and West Yorkshire. Our central positioning minimises travel times to dispersed site locations across the region.

/// [dome.solo.exile](http://dome.solo.exile)



## Warrington - Parkside Road

Our Warrington depot extends Civcon's reach into the North West, providing comprehensive coverage across Cheshire, Lancashire, and Merseyside. The depot's location benefits from proximity to the M6 and M56 motorways, enabling swift deployment to major infrastructure projects throughout the region. This strategic position allows us to support large-scale schemes across the North West with minimal mobilisation delays.

/// [midwinter.rewriting.purest](http://midwinter.rewriting.purest)

